

Internal

NodeB Software Installation

V100R007

www.huawei.com

Objectives

- Upon completion of this course, you will be able to:
 - ⇒ Master installation of NodeB data configuration tool
 - ⇒ Master installation of NodeB LMT software
 - ⇒ Master management of NodeB configuration file



References

- 《NodeB LMT User Guide》
- 《RAN CME User Guide 》
- 《 NodeB Commissioning Guide》



Contents

Chapter 1 Overview

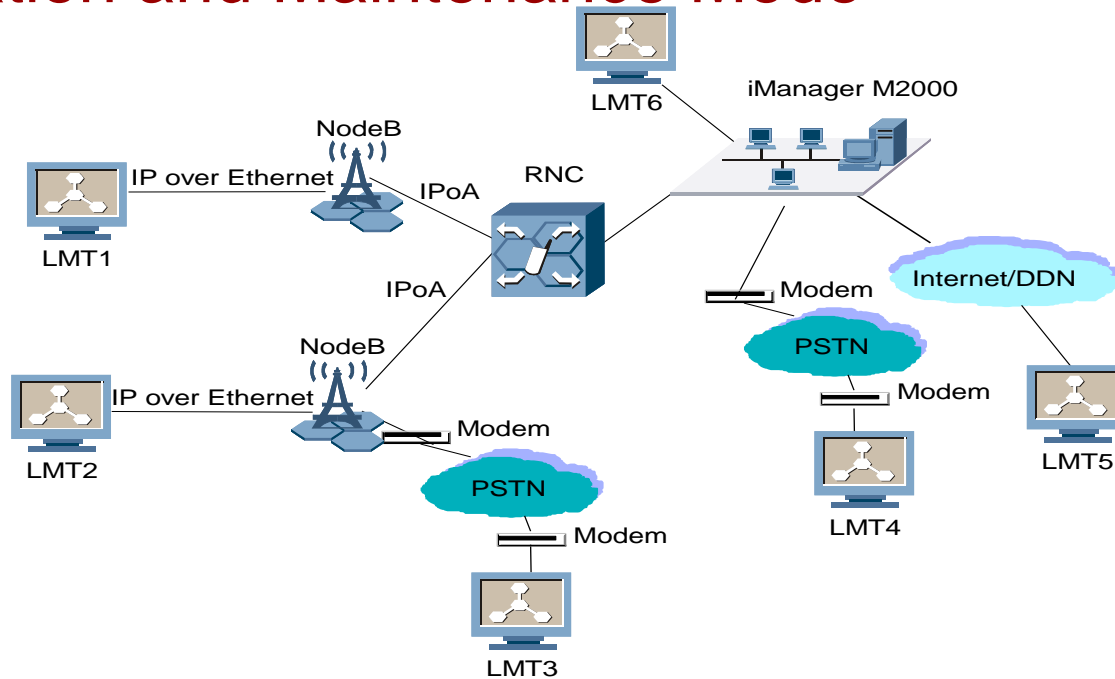
Chapter 2 Installing Configuration Tool

Chapter 3 Installing LMT Software

Chapter 4 Installing NodeB Software



Operation and Maintenance Mode



O&M mode	Description
Near end O&M	The LMT is connected to the NodeB through the Ethernet port on the NMPT, as the LMT1 and LMT2
Far end O&M	The LMT is connected to the NodeB through the M2000 Server and the IP over ATM (IPoA) channel between the NodeB and the RNC, as the LMT5 and LMT6
Remote O&M	The LMT is connected to the NodeB through a Modem, as the LMT3 and LMT4

Overview

- Data Configuration Toolkit
 - ⇒ MSDE2000A(Microsoft SQL Server 2000 Desktop Engine)
 - Exchanging data with CME and storing the configuration data
 - ⇒ CME software (extensible configuration tool)
 - Working offline with graphic user interface (GUI)
 - Configuring the Huawei WCDMA RAN Network Element (NE) devices
- LMT Software (local maintenance terminal)
 - Testing NodeB
 - Maintaining Local NodeB
 - Troubleshooting
- NodeB Software
 - ⇒ NodeB program: NodeB.pck
 - Having been installed before leaving factory
 - ⇒ NodeB BOOTROM : NBRom.pck
 - Having been installed before leaving factory
 - ⇒ NodeB data configuration file: NodeBCfg.xml
 - Installing on site

Contents

Chapter 1 Overview

Chapter 2 Installing Configuration Tool

Chapter 3 Installing LMT Software

Chapter 4 Installing NodeB Software



Installation Environment

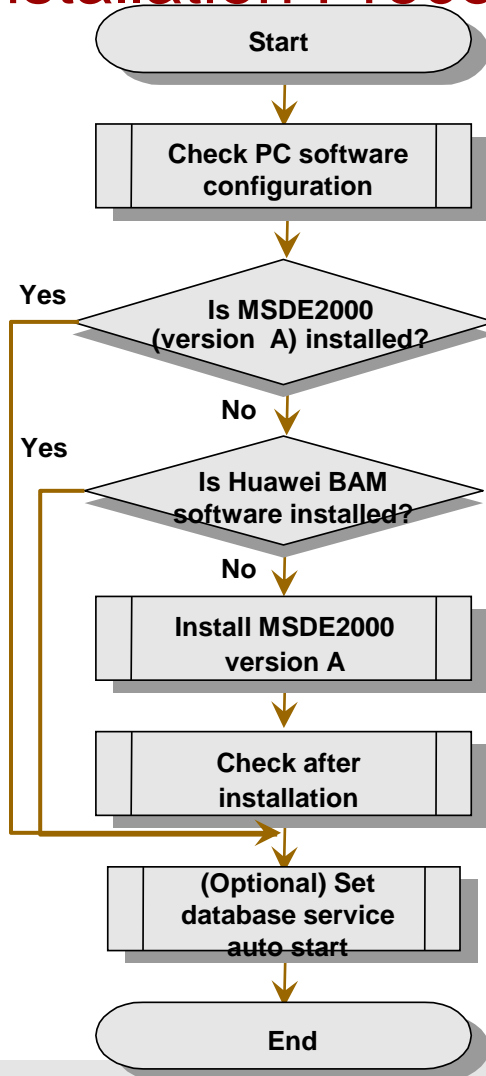
Hardware requirements

Item	Minimum configuration	Standard configuration
CPU	PIII 600Hz	P4 2.4GHz
Memory	128M	512M
Hard drive capacity	10G	40G

Software requirements

Item	Requirement
Operating system	<p>The operating system can be either of the following:</p> <ul style="list-style-type: none">● Microsoft Windows 2000 Professional with patch version of Service Pack 2 or later● Microsoft Windows XP with patch version of Service Pack 1 or later

Installation Procedure — MSDE2000A






- Installation Steps

- ⇒ Log into the OS as an administrator
- ⇒ Make sure the default installation directory D:\SQLSRV\MSSQL does not exist or is null
- ⇒ Go to the MSDE2000A sub-directory of the installation CD and start install.bat
- ⇒ Installation finished, restart the PC

Installation Checking — MSDE2000A

- Checking time:
 - ⇒ After installing MSDE2000A and the PC finishing restarting
- Checking item:
 - ⇒ At the bottom right corner of the window
 - ⇒ whether any one of the icons listed below is displayed
 - ⇒ If so, it shows the MSDE2000A is installed successfully

Icon	State
	MSDE2000 database service is started.
	MSDE2000 database service is paused.
	MSDE2000 database service is stopped.

Installation Procedure — CME

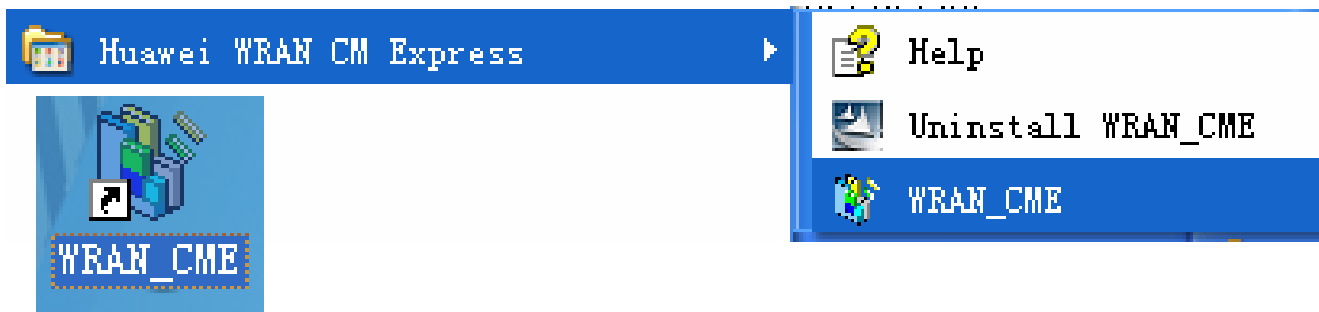
- Installation Steps
 - ⇒ Log into the system as an administrator
 - ⇒ Start MSDE2000 database service
 - ⇒ Execute SETUP.exe at the root directory of the installation CD
 - ⇒ Accept license agreement
 - ⇒ Select installation directory
 - ⇒ Select the components to install
 - ⇒ Check the settings
 - ⇒ Install and copy files
 - ⇒ Restart the PC to finish installation



Installation Checking — CME

- Checking time
 - ⇒ After installing CME and the PC finishing restarting
- Checking item

Item	Operation	Result
Program group	Choose Start -> Program	The program group CME RAN V100R002 is displayed in the program list as shown in Figure a.
Shortcut	Look for the CME shortcut icon on desktop	The icon shown in Figure b is on the desktop.



Contents

Chapter 1 Overview

Chapter 2 Installing Configuration Tool

Chapter 3 Installing LMT Software

Chapter 4 Installing NodeB Software



Installation Environment

Hardware requirements

Item	Quantity	Recommended configuration	Minimum configuration
CPU	1	2.4 G	400 M
RAM	1	512 M	64 M
Hard disk	1	40 G	1 G (the minimum available space)
Display adapter resolution	--	1024 x 768	800 x 600
Network adapter	1	10&100 M	10&100 M


Software requirements

Item	Standard configuration
Operating system	Windows 2000 Professional (SP4) or above of English
Default language of operating system	Western Europe and United States
Web browser	Microsoft Internet Explorer 5.5 or above

Installation LMT Software

- Installation Steps

- ⇒ Run setup. exe on the installation disk
- ⇒ Choose Setup Language
- ⇒ Accept license agreement
- ⇒ Learn installation guide
- ⇒ Verify serial number
- ⇒ Choose destination location
- ⇒ Select setup type
- ⇒ Select program folder
- ⇒ Copy files
- ⇒ Finish installation



Please follow the manual to finish the LMT software installation

Installation Checking

- Checking time

 - ⇒ **After installing LMT**

- Checking item

Item	Operation	Result
Program group	Choose Start -> Program	The program group Huawei Local Maintenance Terminal is displayed in the program list as shown in Figure a
Shortcut	Look for the LMT shortcut icon on desktop	The icon shown in Figure b is on the desktop

- Logging into NodeB:

 - ⇒ Setting IP address for LMT computer

 - Default IP: 17.21.2.15, subnet mask: 255.255.0.0 (local maintenance)
 - Default IP: in the same subnet of BAM external IP (remote maintenance)

 - ⇒ Connecting LMT computer to NodeB

 - ⇒ Starting LMT software

Contents

Chapter 1 Overview

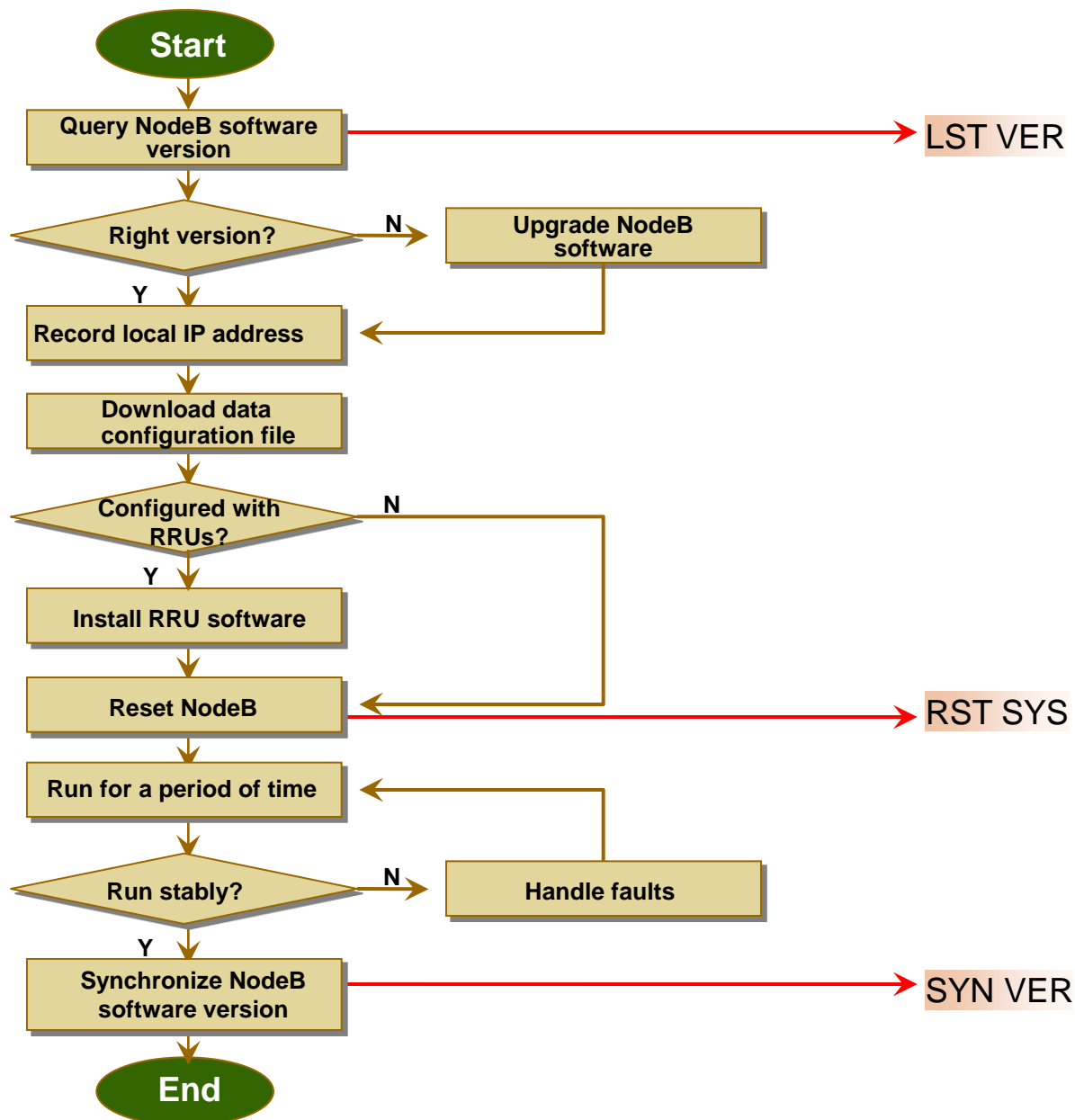
Chapter 2 Installing Configuration Tool

Chapter 3 Installing LMT Software

Chapter 4 Installing NodeB Software



Installation Procedure



Installation Checking

- Checking time
 - ⇒ After downloading the data configuration file to NodeB and NodeB resetting
- Checking item

Item	Operation	Result
Software version	LST VER LST SOFTWARE	The version of the NodeB software is the right one
Alarm status	Open NodeB alarm management system	There's no alarm in it
Cell status	MML command: DSP LOCELL	Local Cell Status = Local Cell Available
Services	Make a voice phone call, a video phone call and browse web	Services can be provided normally

Thank You

www.huawei.com