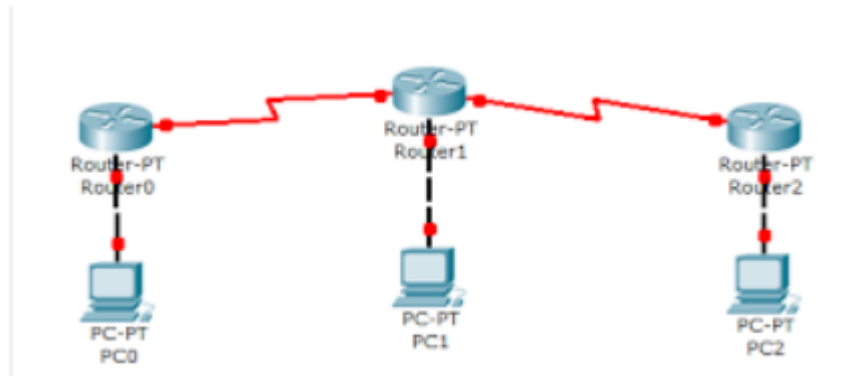


Konfigurasi Router OSPF Di Cisco Packet Tracer

Konfigurasi OSPF di Cisco Packet Tracer.

Contoh seperti gambar dibawah :



Selanjutnya,

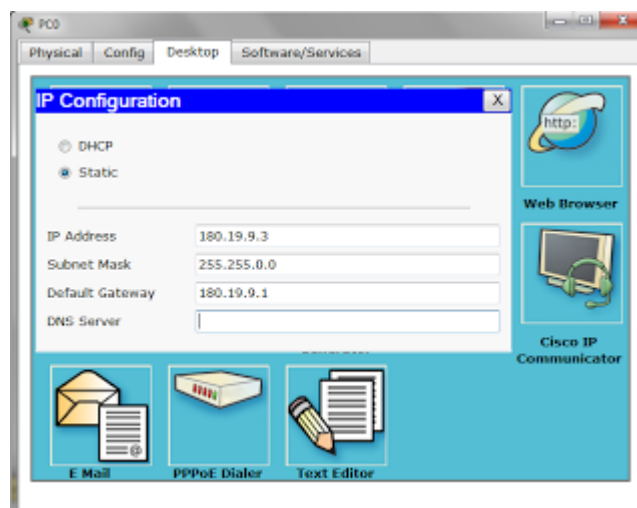
Pemberian IP Address pada setiap PC...

- Pemberian IP PC0 :

IP Adress : 180.19.9.3

subnet mask : 255.255.0.0

gateway : 180.19.9.1

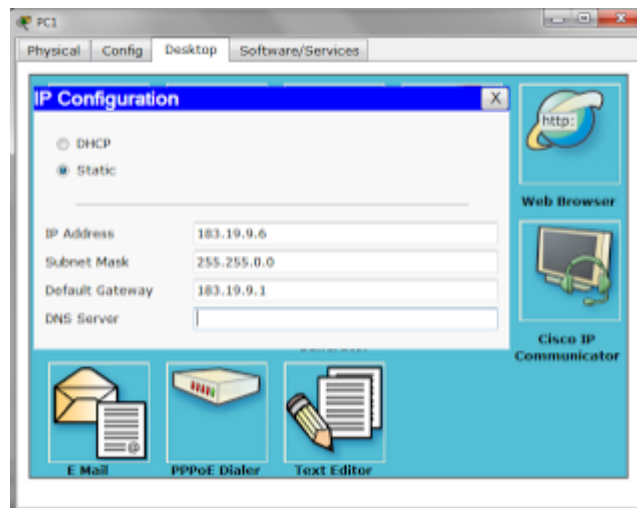


- Pemberian IP PC1 :

IP Adress : 183.19.9.6

subnet mask : 255.255.0.0

gateway : 183.19.9.1

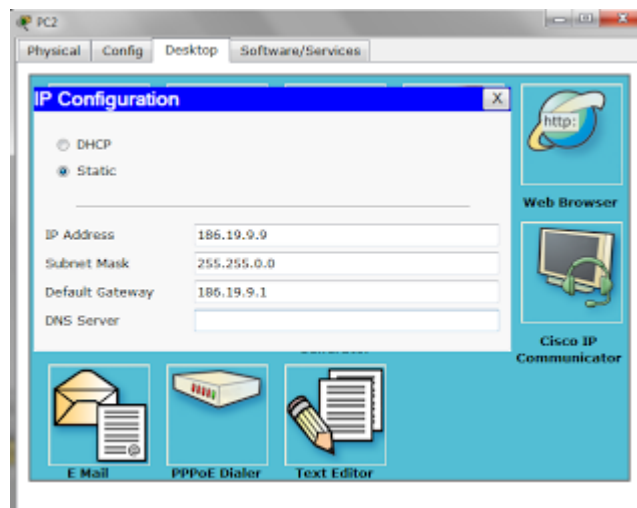


- Pemberian IP PC02 :

IP Adress : 186.19.9.9

subnet mask : 255.255.0.0

gateway : 186.19.9.1



Langkah Ketiga,

Selanjutnya berikan IP Address dan Konfigurasi OSPF pada setiap router .

Contoh sebagai berikut :

Pemberian IP Address Router0 :

Continue with configuration dialog? [yes/no]: no

Press RETURN to get started!

```
Router>enable
```

```
Router#configure terminal
```

```
Enter configuration commands, one per line. End with CNTL/Z.
```

```
Router(config)#int fa0/0
```

```
Router(config-if)#ip address 180.19.9.1 255.255.0.0
```

```
Router(config-if)#no shut
```

```
Router(config-if)#
```

```
%LINK-5-CHANGED: Interface FastEthernet0/0, changed state to up
```

```
%LINEPROTO-5-UPDOWN: Line protocol on Interface FastEthernet0/0, changed state to up
```

```
Router(config-if)#exit
```

```
Router(config)#int se2/0
```

```
Router(config-if)#ip address 12.12.11.1 255.0.0.0
```

```
Router(config-if)#band 125
```

```
Router(config-if)#cl ra 125000
```

```
Router(config-if)#no shut
```

```
%LINK-5-CHANGED: Interface Serial2/0, changed state to down
```

```
Router(config-if)#exit
```

```
Router(config)#exit
```

```
Router#
```

```
%SYS-5-CONFIG_I: Configured from console by console
```

```
wr
```

```
Building configuration...
```

```
[OK]
```

Konfigurasi OSPF pada Router0 :

```
Router(config)#router ospf 9
Router(config)#router-id 1.1.1.1
Router(config-router)#net 180.19.9.0 0.0.255.255 area 0
Router(config-router)#net 12.12.11.0 0.255.255.255 area 0
Router(config-router)#log-adjacency
Router(config-router)#exit
Router(config)#exit
Router#
%SYS-5-CONFIG_1: Configured from console by console
wr
Building configuration...
[OK]
```

Pemberian IP Address Router1 :

Continue with configuration dialog? [yes/no]: no

Press RETURN to get started!

```
Router>enable
Router#configure terminal
Enter configuration commands, one per line. End with CNTL/Z.
Router(config)#int fa0/0
Router(config-if)#ip address 183.19.9.1 255.255.0.0
Router(config-if)#no shut

Router(config-if)#
%LINK-5-CHANGED: Interface FastEthernet0/0, changed state to up

%LINEPROTO-5-UPDOWN: Line protocol on Interface FastEthernet0/0, changed state to up
```

```
Router(config-if)#exit
Router(config)#int se2/0
Router(config-if)#ip address 12.12.11.2 255.0.0.0
Router(config-if)#band 125
Router(config-if)#no shut
```

```
%LINK-5-CHANGED: Interface Serial2/0, changed state to down
Router(config-if)#exit
```

```
Router(config-if)#exit
Router(config)#int se3/0
Router(config-if)#ip address 198.168.8.1 255.255.255.0
Router(config-if)#band 125
Router(config-if)#cl ra 125000
Router(config-if)#no shut
```

```
%LINK-5-CHANGED: Interface Serial3/0, changed state to down
Router(config-if)#exit
```

```
Router(config)#exit
Router#
%SYS-5-CONFIG_I: Configured from console by console
wr
Building configuration...
[OK]
```

Konfigurasi OSPF pada Router1 :

```
Router(config)#router ospf 9
Router(config-router)#net 183.19.9.0 0.0.255.255 area 0
Router(config-router)#net 12.12.11.0 0.255.255.255 area 0
Router(config-router)#net 198.168.8.0 0.0.0.255 area 1
Router(config-router)#log-adjacency
Router(config-router)#exit
```

```
Router(config)#exit
Router#
%SYS-5-CONFIG_I: Configured from console by console
wr
Building configuration...
[OK]
Router#
```

Pemberian IP Address Router2 :

Continue with configuration dialog? [yes/no]: no

Press RETURN to get started!

```
Router>enable
Router#configure terminal
Enter configuration commands, one per line. End with CNTL/Z.
Router(config)#int fa0/0
Router(config-if)#ip address 186.19.9.1 255.255.0.0
Router(config-if)#no shut

Router(config-if)#
%LINK-5-CHANGED: Interface FastEthernet0/0, changed state to up

%LINEPROTO-5-UPDOWN: Line protocol on Interface FastEthernet0/0, changed state to up

Router(config-if)#exit
Router(config)#int se2/0
Router(config-if)#ip address 198.168.8.2 255.255.255.0
Router(config-if)#band 125
Router(config-if)#no shut
```

```
%LINK-5-CHANGED: Interface Serial2/0, changed state to down  
Router(config-if)#exit
```

Konfigurasi OSPF pada Router2 :

```
Router(config)#router ospf 9  
Router(config)#router-id 2.2.2.2  
Router(config-router)#net 186.19.9.0 0.0.255.255 area 1  
Router(config-router)#net 198.168.8.0 0.0.0.255 area 1  
Router(config-router)#log-adjacency  
Router(config-router)#exit  
Router(config)#exit  
Router#  
%SYS-5-CONFIG_I: Configured from console by console  
wr  
Building configuration...  
[OK]
```