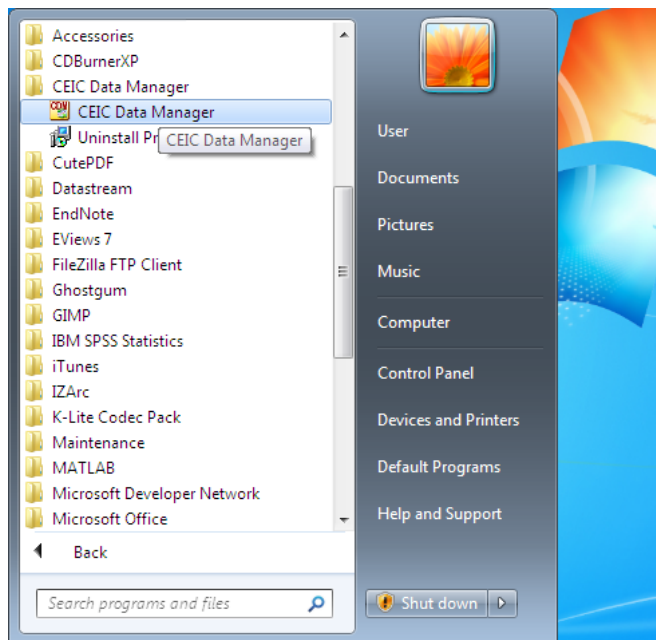


## TO CONFIGURE CEIC DATA MANAGER USERNAME AND PASSWORD

1. Open CEIC Data Manager from Start Menu → All Programs → CEIC Data Manager → CEIC Data Manager.



2. Enter Username and Password. Then Click on .

**Username: my-nottingham-nubs1**

**Password: malaysia1**



3. CEIC Data Manager is now connected...!!!