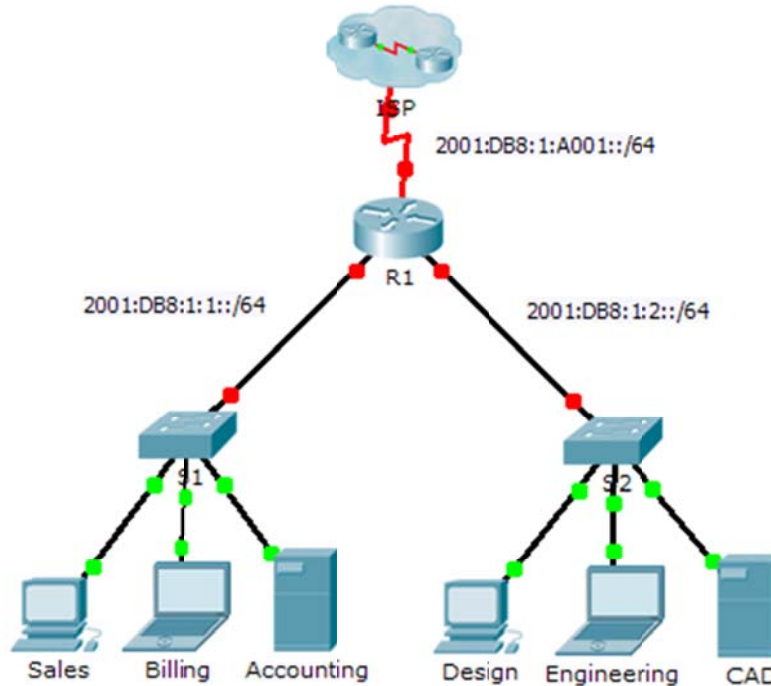


Packet Tracer - Configuring IPv6 Addressing

Topology



Addressing Table

Device	Interface	IPv6 Address/Prefix	Default Gateway
R1	G0/0	2001:DB8:1:1::1/64	N/A
	G0/1	2001:DB8:1:2::1/64	N/A
	S0/0/0	2001:DB8:1:A001::2/64	N/A
	Link-local	FE80::1	N/A
Sales	NIC	2001:DB8:1:1::2/64	FE80::1
Billing	NIC	2001:DB8:1:1::3/64	FE80::1
Accounting	NIC	2001:DB8:1:1::4/64	FE80::1
Design	NIC	2001:DB8:1:2::2/64	FE80::1
Engineering	NIC	2001:DB8:1:2::3/64	FE80::1
CAD	NIC	2001:DB8:1:2::4/64	FE80::1

Objectives

Part 1: Configure IPv6 Addressing on the Router

Part 2: Configure IPv6 Addressing on Servers

Part 3: Configure IPv6 Addressing on Clients

Part 4: Test and Verify Network Connectivity

Background

In this activity, you will practice configuring IPv6 addresses on a router, servers, and clients. You will also practice verifying your IPv6 addressing implementation.

Part 1: Configure IPv6 Addressing on the Router

Step 1: Enable the router to forward IPv6 packets.

- Enter the `ipv6 unicast-routing` global configuration command. This command must be configured to enable the router to forward IPv6 packets. This command will be discussed in a later semester.

```
R1(config)# ipv6 unicast-routing
```

Step 2: Configure IPv6 addressing on GigabitEthernet0/0.

- Click **R1** and then the **CLI** tab. Press **Enter**.
- Enter privileged EXEC mode.
- Enter the commands necessary to transition to interface configuration mode for GigabitEthernet0/0.

- Configure the IPv6 address with the following command:

```
R1(config-if)# ipv6 address 2001:DB8:1:1::1/64
```

- Configure the link-local IPv6 address with the following command:

```
R1(config-if)# ipv6 address FE80::1 link-local
```

- Activate the interface.

Step 3: Configure IPv6 addressing on GigabitEthernet0/1.

- Enter the commands necessary to transition to interface configuration mode for GigabitEthernet0/1.
- Refer to the **Addressing Table** to obtain the correct IPv6 address.
- Configure the IPv6 address, the link-local address and activate the interface.

Step 4: Configure IPv6 addressing on Serial0/0/0.

- Enter the commands necessary to transition to interface configuration mode for Serial0/0/0.
- Refer to the **Addressing Table** to obtain the correct IPv6 address.
- Configure the IPv6 address, the link-local and activate the interface.

Part 2: Configure IPv6 Addressing on the Servers

Step 1: Configure IPv6 addressing on the Accounting Server.

- Click **Accounting** and click the **Desktop** tab > **IP Configuration**.
- Set the **IPv6 Address** to **2001:DB8:1:1::4** with a prefix of **/64**.
- Set the **IPv6 Gateway** to the link-local address, **FE80::1**.

Step 2: Configure IPv6 addressing on the CAD Server.

Repeat Steps 1a to 1c for the **CAD** server. Refer to the **Addressing Table** for the IPv6 address.

Part 3: Configure IPv6 Addressing on the Clients

Step 1: Configure IPv6 addressing on the Sales and Billing Clients.

- Click **Billing** and then select the **Desktop** tab followed by **IP Configuration**.
- Set the **IPv6 Address** to **2001:DB8:1:1::3** with a prefix of **/64**.
- Set the **IPv6 Gateway** to the link-local address, **FE80::1**.
- Repeat Steps 1a through 1c for **Sales**. Refer to the **Addressing Table** for the IPv6 address.

Step 2: Configure IPv6 Addressing on the Engineering and Design Clients.

- Click **Engineering** and then select the **Desktop** tab followed by **IP Configuration**.
- Set the **IPv6 Address** to **2001:DB8:1:2::3** with a prefix of **/64**.
- Set the **IPv6 Gateway** to the link-local address, **FE80::1**.
- Repeat Steps 1a through 1c for **Design**. Refer to the **Addressing Table** for the IPv6 address.

Part 4: Test and Verify Network Connectivity

Step 1: Open the server web pages from the clients.

- Click **Sales** and click the **Desktop** tab. Close the **IP Configuration** window, if necessary.
- Click **Web Browser**. Enter **2001:DB8:1:1::4** in the URL box and click **Go**. The **Accounting** website should appear.
- Enter **2001:DB8:1:2::4** in the URL box and click **Go**. The **CAD** website should appear.
- Repeat steps 1a through 1d for the rest of the clients.

Step 2: Ping the ISP.

- Open any client computer configuration window by clicking the icon.
- Click the **Desktop** tab > **Command Prompt**.
- Test connectivity to the ISP by entering the following command:

```
PC> ping 2001:DB8:1:A001::1
```
- Repeat the **ping** command with other clients until full connectivity is verified.